

## Product datasheet for **TA361745**

### YIF1B Rabbit Polyclonal Antibody

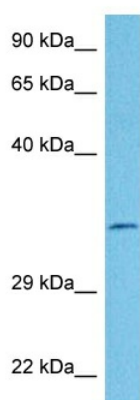
#### Product data:

Product Type:	Primary Antibodies
Applications:	WB
Reactivity:	Human
Host:	Rabbit
Clonality:	Polyclonal
Immunogen:	The immunogen is a synthetic peptide directed towards the N terminal region of human YIF1B
Specificity:	<b>Expected reactivity:</b> Human
Formulation:	Liquid. Purified antibody supplied in 1x PBS buffer with 0.09% (w/v) sodium azide and 2% sucrose. <i>Note that this product is shipped as lyophilized powder to China customers.</i>
Concentration:	lot specific
Purification:	Affinity purified
Conjugation:	Unconjugated
Storage:	For short term use, store at 2-8°C up to 1 week. For long term storage, store at -20°C in small aliquots to prevent freeze-thaw cycles.
Stability:	Shelf life: one year from despatch.
Predicted Protein Size:	34 kDa
Gene Name:	Yip1 interacting factor homolog B, membrane trafficking protein
Database Link:	<a href="#">NP_001034761.1</a> <a href="#">Entrez Gene 90522 Human</a> <a href="#">Q5BJH7</a>
Background:	The function of this protein remains unknown.
Synonyms:	FinGER8; FLJ23477; FLJ50074; MGC39135
Protein Families:	Transmembrane



[View online »](#)

## Product images:



Host: Rabbit  
Target Name: YIF1B  
Sample Type: 786-0 Cell Lysate  
Antibody Dilution: 1.0 $\mu$ g/ml

Host: Rabbit  
Target Name: YIF1B  
Sample Tissue: Human 786-0 Whole Cell lysates  
Antibody Dilution: 1  $\mu$ g/ml