

## Product datasheet for **TA361743**

### MRPL44 Rabbit Polyclonal Antibody

#### Product data:

Product Type:	Primary Antibodies
Applications:	WB
Reactivity:	Human
Host:	Rabbit
Clonality:	Polyclonal
Immunogen:	The immunogen is a synthetic peptide directed towards the C terminal region of human MRPL44
Specificity:	<b>Expected reactivity:</b> Human
Formulation:	Liquid. Purified antibody supplied in 1x PBS buffer with 0.09% (w/v) sodium azide and 2% sucrose.
Concentration:	lot specific
Purification:	Affinity purified
Conjugation:	Unconjugated
Storage:	For short term use, store at 2-8°C up to 1 week. For long term storage, store at -20°C in small aliquots to prevent freeze-thaw cycles.
Stability:	Shelf life: one year from despatch.
Predicted Protein Size:	36 kDa
Gene Name:	mitochondrial ribosomal protein L44
Database Link:	<a href="#">NP_075066.1</a> <a href="#">Entrez Gene 65080 Human</a> <a href="#">Q9H9J2</a>



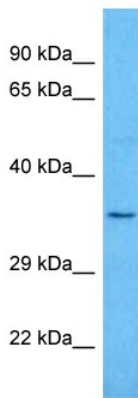
[View online »](#)

**Background:**

Mammalian mitochondrial ribosomal proteins are encoded by nuclear genes and help in protein synthesis within the mitochondrion. Mitochondrial ribosomes (mitoribosomes) consist of a small 28S subunit and a large 39S subunit. They have an estimated 75% protein to rRNA composition compared to prokaryotic ribosomes, where this ratio is reversed. Another difference between mammalian mitoribosomes and prokaryotic ribosomes is that the latter contain a 5S rRNA. Among different species, the proteins comprising the mitoribosome differ greatly in sequence, and sometimes in biochemical properties, which prevents easy recognition by sequence homology. This gene encodes a 39S subunit protein.

**Synonyms:**

FLJ12701; FLJ13990; FLJ37688; L44MT; MRP-L44

**Product images:**

Host: Rabbit  
Target Name: MRPL44  
Sample Type: Du145 Cell Lysate  
Antibody Dilution: 1.0µg/ml

Host: Rabbit  
Target Name: MRPL44  
Sample Tissue: Human Du145 Whole Cell lysates  
Antibody Dilution: 1ug/ml