

## Product datasheet for **TA361742**

### Phosphoglucomutase 5 (PGM5) Rabbit Polyclonal Antibody

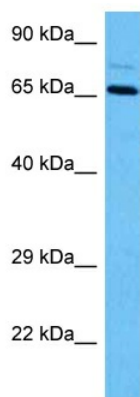
#### Product data:

Product Type:	Primary Antibodies
Applications:	WB
Reactivity:	Human
Host:	Rabbit
Clonality:	Polyclonal
Immunogen:	The immunogen is a synthetic peptide directed towards the C terminal region of human PGM5
Specificity:	<b>Expected reactivity:</b> Human
Formulation:	Liquid. Purified antibody supplied in 1x PBS buffer with 0.09% (w/v) sodium azide and 2% sucrose.
Concentration:	lot specific
Purification:	Affinity purified
Conjugation:	Unconjugated
Storage:	For short term use, store at 2-8°C up to 1 week. For long term storage, store at -20°C in small aliquots to prevent freeze-thaw cycles.
Stability:	Shelf life: one year from despatch.
Predicted Protein Size:	62 kDa
Gene Name:	phosphoglucomutase 5
Database Link:	<a href="#">NP_068800.2</a> <a href="#">Entrez Gene 5239 Human</a> <a href="#">Q15124</a>
Background:	Phosphoglucomutases (EC 5.2.2.2.), such as PGM5, are phosphotransferases involved in interconversion of glucose-1-phosphate and glucose-6-phosphate. PGM activity is essential in formation of carbohydrates from glucose-6-phosphate and in formation of glucose-6-phosphate from galactose and glycogen.
Synonyms:	Aciculin; PGM-RP; PGMRP
Protein Families:	Druggable Genome



[View online »](#)

## Product images:



Host: Rabbit  
Target Name: PGM5  
Sample Type: ACHN Cell Lysate  
Antibody Dilution: 1.0µg/ml

Host: Rabbit  
Target Name: PGM5  
Sample Tissue: Human ACHN Whole Cell lysates  
Antibody Dilution: 1ug/ml