

## Product datasheet for TA361739

### LRFN4 Rabbit Polyclonal Antibody

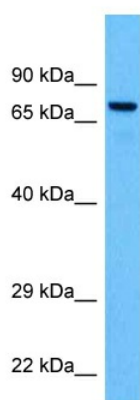
#### Product data:

Product Type:	Primary Antibodies
Applications:	WB
Reactivity:	Human
Host:	Rabbit
Clonality:	Polyclonal
Immunogen:	The immunogen is a synthetic peptide directed towards the C terminal region of human LRFN4
Specificity:	<b>Expected reactivity:</b> Human
Formulation:	Liquid. Purified antibody supplied in 1x PBS buffer with 0.09% (w/v) sodium azide and 2% sucrose. <i>Note that this product is shipped as lyophilized powder to China customers.</i>
Concentration:	lot specific
Purification:	Affinity purified
Conjugation:	Unconjugated
Storage:	For short term use, store at 2-8°C up to 1 week. For long term storage, store at -20°C in small aliquots to prevent freeze-thaw cycles.
Stability:	Shelf life: one year from despatch.
Predicted Protein Size:	69 kDa
Gene Name:	leucine rich repeat and fibronectin type III domain containing 4
Database Link:	<a href="#">NP_076941.2</a> <a href="#">Entrez Gene 78999 Human</a> <a href="#">Q6PJG9</a>
Background:	Promotes neurite outgrowth in hippocampal neurons. May play a role in redistributing DLG4 to the cell periphery (By similarity).
Synonyms:	FIGLER6; MGC3103; SALM3



[View online »](#)

## Product images:



Host: Rabbit  
Target Name: LRFN4  
Sample Type: ACHN Cell Lysate  
Antibody Dilution: 1.0 $\mu$ g/ml

Host: Rabbit  
Target Name: LRFN4  
Sample Tissue: Human ACHN Whole Cell lysates  
Antibody Dilution: 1 $\mu$ g/ml