

## Product datasheet for **TA361730**

### SAPS3 (PPP6R3) Rabbit Polyclonal Antibody

#### Product data:

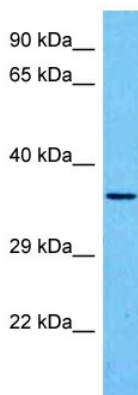
Product Type:	Primary Antibodies
Applications:	WB
Reactivity:	Human
Host:	Rabbit
Clonality:	Polyclonal
Immunogen:	The immunogen is a synthetic peptide directed towards the middle terminal region of human UPK3B
Specificity:	<b>Expected reactivity:</b> Human
Formulation:	Liquid. Purified antibody supplied in 1x PBS buffer with 0.09% (w/v) sodium azide and 2% sucrose. <i>Note that this product is shipped as lyophilized powder to China customers.</i>
Concentration:	lot specific
Purification:	Affinity purified
Conjugation:	Unconjugated
Storage:	For short term use, store at 2-8°C up to 1 week. For long term storage, store at -20°C in small aliquots to prevent freeze-thaw cycles.
Stability:	Shelf life: one year from despatch.
Predicted Protein Size:	35 kDa
Gene Name:	protein phosphatase 6 regulatory subunit 3
Database Link:	<a href="#">NP_085047.1</a> <a href="#">Entrez Gene 105375355 Human</a> <a href="#">Entrez Gene 55291 Human</a> <a href="#">Q9BT76</a>
Background:	Protein phosphatase regulatory subunits, such as SAPS3, modulate the activity of protein phosphatase catalytic subunits by restricting substrate specificity, recruiting substrates, and determining the intracellular localization of the holoenzyme. SAPS3 is a regulatory subunit for the protein phosphatase-6 catalytic subunit (PPP6C; MIM 612725) (Stefansson and Brautigan, 2006 [PubMed 16769727]).[supplied by OMIM, Nov 2010]



[View online »](#)

**Synonyms:** 4930528G08Rik; 9130026N02Rik; D19Bwg1430e; D19Ert703e; mKIAA1558; Pp6r3; Ppcs3; Pptcs3; Sap1; Saps3

### Product images:



Host: Rabbit  
Target Name: UPK3B  
Sample Type: LN18 Cell Lysate  
Antibody Dilution: 1.0µg/ml

Host: Rabbit  
Target Name: UPK3B  
Sample Tissue: Human LN18 Whole Cell lysates  
Antibody Dilution: 1ug/ml