

Product datasheet for **TA361728**

P15RS (RPRD1A) Rabbit Polyclonal Antibody

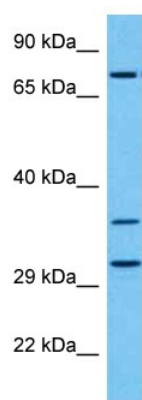
Product data:

Product Type:	Primary Antibodies
Applications:	WB
Reactivity:	Human
Host:	Rabbit
Clonality:	Polyclonal
Immunogen:	The immunogen is a synthetic peptide directed towards the middle region of human RPRD1A
Specificity:	Expected reactivity: Human
Formulation:	Liquid. Purified antibody supplied in 1x PBS buffer with 0.09% (w/v) sodium azide and 2% sucrose.
Concentration:	lot specific
Purification:	Affinity purified
Conjugation:	Unconjugated
Storage:	For short term use, store at 2-8°C up to 1 week. For long term storage, store at -20°C in small aliquots to prevent freeze-thaw cycles.
Stability:	Shelf life: one year from despatch.
Predicted Protein Size:	30 kDa
Gene Name:	regulation of nuclear pre-mRNA domain containing 1A
Database Link:	NP_001290340.1 Entrez Gene 55197 Human Q96P16-3
Background:	This gene encodes a cell-cycle and transcription regulatory protein. The encoded protein interacts with the cell cycle inhibitor cyclin-dependent kinase 4 inhibitor B and may function as a negative regulator of G(1)/S phase progression. This protein also forms homo- and heterodimers with the protein, regulation of nuclear pre-mRNA domain-containing protein 1B, to form a scaffold that interacts with the C-terminal domain of RNA polymerase II subunit B1 and regulates several aspects of transcription. Alternate splicing results in multiple transcript variants. A pseudogene of this gene is found on chromosome 16.
Synonyms:	FLJ10656; HsT3101; MGC19513; P15RS



[View online »](#)

Product images:



Host: Rabbit
Target Name: RPRD1A
Sample Type: RPMI 8226 Cell Lysate
Antibody Dilution: 1.0µg/ml

Host: Rabbit
Target Name: RPRD1A
Sample Tissue: Human RPMI 8226 Whole Cell lysates
Antibody Dilution: 1ug/ml