

Product datasheet for **TA361722**

EPS8 like protein 3 (EPS8L3) Rabbit Polyclonal Antibody

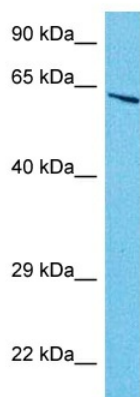
Product data:

Product Type:	Primary Antibodies
Applications:	WB
Reactivity:	Human
Host:	Rabbit
Clonality:	Polyclonal
Immunogen:	The immunogen is a synthetic peptide directed towards the middle region of human EPS8L3
Specificity:	Expected reactivity: Human
Formulation:	Liquid. Purified antibody supplied in 1x PBS buffer with 0.09% (w/v) sodium azide and 2% sucrose.
Concentration:	lot specific
Purification:	Affinity purified
Conjugation:	Unconjugated
Storage:	For short term use, store at 2-8°C up to 1 week. For long term storage, store at -20°C in small aliquots to prevent freeze-thaw cycles.
Stability:	Shelf life: one year from despatch.
Predicted Protein Size:	65 kDa
Gene Name:	EPS8 like 3
Database Link:	NP_078802.2 Entrez Gene 79574 Human Q8TE67
Background:	This gene encodes a protein that is related to epidermal growth factor receptor pathway substrate 8 (EPS8), a substrate for the epidermal growth factor receptor. The function of this protein is unknown. Alternatively spliced transcript variants encoding different isoforms exist.
Synonyms:	EPS8R3; FLJ21522; MGC16817
Protein Families:	Druggable Genome



[View online »](#)

Product images:



Host: Rabbit
Target Name: EPS8L3
Sample Type: HepG2 Cell Lysate
Antibody Dilution: 1.0 μ g/ml

Host: Rabbit
Target Name: EPS8L3
Sample Tissue: Human HepG2 Whole Cell lysates
Antibody Dilution: 1 μ g/ml