

Product datasheet for **TA361718**

EPS8L2 Rabbit Polyclonal Antibody

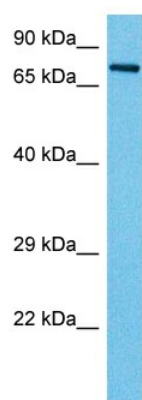
Product data:

Product Type:	Primary Antibodies
Applications:	WB
Reactivity:	Human
Host:	Rabbit
Clonality:	Polyclonal
Immunogen:	The immunogen is a synthetic peptide directed towards the middle region of human EPS8L2
Specificity:	Expected reactivity: Human
Formulation:	Liquid. Purified antibody supplied in 1x PBS buffer with 0.09% (w/v) sodium azide and 2% sucrose.
Concentration:	lot specific
Purification:	Affinity purified
Conjugation:	Unconjugated
Storage:	For short term use, store at 2-8°C up to 1 week. For long term storage, store at -20°C in small aliquots to prevent freeze-thaw cycles.
Stability:	Shelf life: one year from despatch.
Predicted Protein Size:	78 kDa
Gene Name:	EPS8 like 2
Database Link:	NP_073609.2 Entrez Gene 64787 Human Q9H6S3
Background:	This gene encodes a member of the EPS8 gene family. The encoded protein, like other members of the family, is thought to link growth factor stimulation to actin organization, generating functional redundancy in the pathways that regulate actin cytoskeletal remodeling.
Synonyms:	EPS8R2; FLJ16738; FLJ21935; FLJ22171; MGC3088; MGC126530
Protein Families:	Druggable Genome



[View online »](#)

Product images:



Host: Rabbit
Target Name: EPS8L2
Sample Type: DLD1 Cell Lysate
Antibody Dilution: 1.0 μ g/ml

Host: Rabbit
Target Name: EPS8L2
Sample Tissue: Human DLD1 Whole Cell lysates
Antibody Dilution: 1 μ g/ml