

## Product datasheet for **TA361708**

### SSH3 Rabbit Polyclonal Antibody

#### Product data:

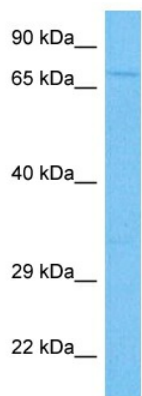
Product Type:	Primary Antibodies
Applications:	WB
Reactivity:	Human
Host:	Rabbit
Clonality:	Polyclonal
Immunogen:	The immunogen is a synthetic peptide directed towards the N terminal region of Human SSH3
Specificity:	<b>Expected reactivity:</b> Human
Formulation:	Liquid. Purified antibody supplied in 1x PBS buffer with 0.09% (w/v) sodium azide and 2% sucrose. <i>Note that this product is shipped as lyophilized powder to China customers.</i>
Concentration:	lot specific
Purification:	Affinity purified
Conjugation:	Unconjugated
Storage:	For short term use, store at 2-8°C up to 1 week. For long term storage, store at -20°C in small aliquots to prevent freeze-thaw cycles.
Stability:	Shelf life: one year from despatch.
Predicted Protein Size:	72 kDa
Gene Name:	slingshot protein phosphatase 3
Database Link:	<a href="#">NP_060327.3</a> <a href="#">Entrez Gene 54961 Human</a> <a href="#">Q8TE77</a>
Background:	The ADF (actin-depolymerizing factor)/cofilin family is composed of stimulus-responsive mediators of actin dynamics. ADF/cofilin proteins are inactivated by kinases such as LIM domain kinase-1. The SSH family appears to play a role in actin dynamics by reactivating ADF/cofilin proteins in vivo.
Synonyms:	FLJ10928; FLJ20515; FLJ42240; hSSH-3L; SSH-3L; SSH3L
Protein Families:	Druggable Genome, Phosphatase



[View online »](#)

Protein Pathways: Regulation of actin cytoskeleton

### Product images:



Host: Rabbit  
Target Name: SSH3  
Sample Type: LN18 Cell Lysate  
Antibody Dilution: 1.0 $\mu$ g/ml

Host: Rabbit  
Target Name: SSH3  
Sample Tissue: Human LN18 Whole Cell lysates  
Antibody Dilution: 1 $\mu$ g/ml