

Product datasheet for **TA361706**

RPP38 Rabbit Polyclonal Antibody

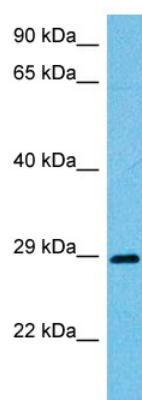
Product data:

Product Type:	Primary Antibodies
Applications:	WB
Reactivity:	Human
Host:	Rabbit
Clonality:	Polyclonal
Immunogen:	The immunogen is a synthetic peptide directed towards the C terminal region of human RPP38
Specificity:	Expected reactivity: Human
Formulation:	Liquid. Purified antibody supplied in 1x PBS buffer with 0.09% (w/v) sodium azide and 2% sucrose. <i>Note that this product is shipped as lyophilized powder to China customers.</i>
Concentration:	lot specific
Purification:	Affinity purified
Conjugation:	Unconjugated
Storage:	For short term use, store at 2-8°C up to 1 week. For long term storage, store at -20°C in small aliquots to prevent freeze-thaw cycles.
Stability:	Shelf life: one year from despatch.
Predicted Protein Size:	31 kDa
Gene Name:	ribonuclease P/MRP subunit p38
Database Link:	NP_001091059.1 Entrez Gene 10557 Human P78345
Background:	Component of ribonuclease P, a protein complex that generates mature tRNA molecules by cleaving their 5'-ends. RPP38 may associate transiently with RNase P RNA as a factor involved in the transport of H1 RNA to the putative site of its assembly in the cell, the nucleolus.
Synonyms:	OTTHUMP00000019202; RP11-455B2.5
Protein Families:	Druggable Genome



[View online »](#)

Product images:



Host: Rabbit
Target Name: RPP38
Sample Type: 786-0 Cell Lysate
Antibody Dilution: 1.0 μ g/ml

Host: Rabbit
Target Name: RPP38
Sample Tissue: Human 786-0 Whole Cell lysates
Antibody Dilution: 1 μ g/ml