

## Product datasheet for **TA361704**

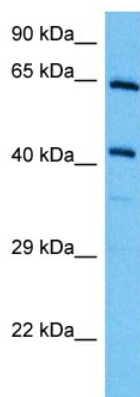
### MA2 (PNMA2) Rabbit Polyclonal Antibody

#### Product data:

Product Type:	Primary Antibodies
Applications:	WB
Reactivity:	Human
Host:	Rabbit
Clonality:	Polyclonal
Immunogen:	The immunogen is a synthetic peptide directed towards the C terminal region of human PNMA2
Specificity:	<b>Expected reactivity:</b> Human
Formulation:	Liquid. Purified antibody supplied in 1x PBS buffer with 0.09% (w/v) sodium azide and 2% sucrose.
Concentration:	lot specific
Purification:	Affinity purified
Conjugation:	Unconjugated
Storage:	For short term use, store at 2-8°C up to 1 week. For long term storage, store at -20°C in small aliquots to prevent freeze-thaw cycles.
Stability:	Shelf life: one year from despatch.
Predicted Protein Size:	42 kDa
Gene Name:	paraneoplastic Ma antigen 2
Database Link:	<a href="#">NP_009188.1</a> <a href="#">Entrez Gene 10687 Human</a> <a href="#">Q9UL42</a>
Background:	Antibodies against PNMA2 are present in sera from patients suffering of paraneoplastic neurological disorders.
Synonyms:	KIAA0883; MA2; MM2; RGAG2



[View online »](#)

**Product images:**


Host: Rabbit  
 Target Name: PNMA2  
 Sample Type: HCT116 Cell Lysate  
 Antibody Dilution: 1.0µg/ml

Host: Rabbit  
 Target Name: PNMA2  
 Sample Tissue: Human HCT116 Whole Cell  
 lysates  
 Antibody Dilution: 1ug/ml