

Product datasheet for **TA361701**

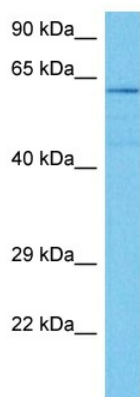
KLHL22 Rabbit Polyclonal Antibody

Product data:

Product Type:	Primary Antibodies
Applications:	WB
Reactivity:	Human
Host:	Rabbit
Clonality:	Polyclonal
Immunogen:	The immunogen is a synthetic peptide directed towards the C terminal region of Human KLHL22
Specificity:	Expected reactivity: Human
Formulation:	Liquid. Purified antibody supplied in 1x PBS buffer with 0.09% (w/v) sodium azide and 2% sucrose.
Concentration:	lot specific
Purification:	Affinity purified
Conjugation:	Unconjugated
Storage:	For short term use, store at 2-8°C up to 1 week. For long term storage, store at -20°C in small aliquots to prevent freeze-thaw cycles.
Stability:	Shelf life: one year from despatch.
Predicted Protein Size:	56 kDa
Gene Name:	kelch like family member 22
Database Link:	NP_116164.2 Entrez Gene 84861 Human Q53GT1-3
Background:	Substrate-specific adapter of a BCR (BTB-CUL3-RBX1) E3 ubiquitin ligase complex required for chromosome alignment and localization of PLK1 at kinetochores. The BCR(KLHL22) ubiquitin ligase complex mediates monoubiquitination of PLK1, leading to PLK1 dissociation from phosphoreceptor proteins and subsequent removal from kinetochores, allowing silencing of the spindle assembly checkpoint (SAC) and chromosome segregation. Monoubiquitination of PLK1 does not lead to PLK1 degradation.
Synonyms:	FLJ14360; kelch-like; KELCHL



[View online »](#)

Product images:


Host: Rabbit
 Target Name: KLHL22
 Sample Type: ACHN Cell Lysate
 Antibody Dilution: 1.0µg/ml

Host: Rabbit
 Target Name: KLHL22
 Sample Tissue: Human ACHN Whole Cell lysates
 Antibody Dilution: 1ug/ml