

## Product datasheet for **TA361696**

### HECTD3 Rabbit Polyclonal Antibody

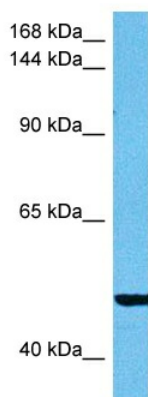
#### Product data:

Product Type:	Primary Antibodies
Applications:	WB
Reactivity:	Human
Host:	Rabbit
Clonality:	Polyclonal
Immunogen:	The immunogen is a synthetic peptide directed towards the middle region of human HECTD3
Specificity:	<b>Expected reactivity:</b> Human
Formulation:	Liquid. Purified antibody supplied in 1x PBS buffer with 0.09% (w/v) sodium azide and 2% sucrose.
Concentration:	lot specific
Purification:	Affinity purified
Conjugation:	Unconjugated
Storage:	For short term use, store at 2-8°C up to 1 week. For long term storage, store at -20°C in small aliquots to prevent freeze-thaw cycles.
Stability:	Shelf life: one year from despatch.
Predicted Protein Size:	51 kDa
Gene Name:	HECT domain E3 ubiquitin protein ligase 3
Database Link:	<a href="#">NP_078878.3</a> <a href="#">Entrez Gene 79654 Human</a> <a href="#">Q5T447-2</a>
Background:	The protein encoded by this gene transfers ubiquitin from an E2 ubiquitin-conjugating enzyme to targeted substrates, leading to the degradation of those substrates. The encoded protein has been shown to transfer ubiquitin to TRIOBP to facilitate cell cycle progression, and to STX8.
Synonyms:	FLJ21156; FLJ31983; MGC161630; RP11-69J16.1
Protein Families:	Druggable Genome



[View online »](#)

## Product images:



Host: Rabbit  
Target Name: HECTD3  
Sample Type: MCF7 Cell Lysate  
Antibody Dilution: 1.0 $\mu$ g/ml

Host: Rabbit  
Target Name: HECTD3  
Sample Tissue: Human MCF7 Whole Cell lysates  
Antibody Dilution: 1 $\mu$ g/ml