

Product datasheet for **TA361694**

G protein regulated inducer of neurite outgrowth 2 (GPRIN2) Rabbit Polyclonal Antibody

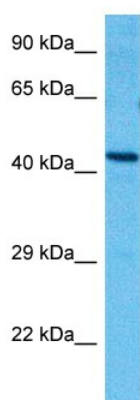
Product data:

Product Type:	Primary Antibodies
Applications:	WB
Reactivity:	Human
Host:	Rabbit
Clonality:	Polyclonal
Immunogen:	The immunogen is a synthetic peptide directed towards the middle region of human GPRIN2
Formulation:	Liquid. Purified antibody supplied in 1x PBS buffer with 0.09% (w/v) sodium azide and 2% sucrose. <i>Note that this product is shipped as lyophilized powder to China customers.</i>
Concentration:	lot specific
Purification:	Affinity purified
Conjugation:	Unconjugated
Storage:	For short term use, store at 2-8°C up to 1 week. For long term storage, store at -20°C in small aliquots to prevent freeze-thaw cycles.
Stability:	Shelf life: one year from despatch.
Predicted Protein Size:	458
Gene Name:	G protein regulated inducer of neurite outgrowth 2
Database Link:	NP_055511.2 Entrez Gene 9721 Human O60269
Background:	May be involved in neurite outgrowth.
Synonyms:	C130040D06Rik; C230073P13; Gm286; mKIAA0514
Protein Families:	Stem cell - Pluripotency



[View online »](#)

Product images:



Host: Rabbit
Target Name: GPRIN2
Sample Type: HCT116 Cell Lysate
Antibody Dilution: 1.0 μ g/ml

Host: Rabbit
Target Name: GPRIN2
Sample Tissue: Human HCT116 Whole Cell lysates
Antibody Dilution: 1 μ g/ml