

## Product datasheet for TA361692

### Epsin 1 (EPN1) Rabbit Polyclonal Antibody

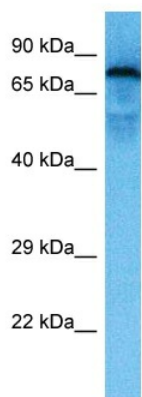
#### Product data:

Product Type:	Primary Antibodies
Applications:	WB
Reactivity:	Human
Host:	Rabbit
Clonality:	Polyclonal
Immunogen:	The immunogen is a synthetic peptide directed towards the middle region of human EPN1
Formulation:	Liquid. Purified antibody supplied in 1x PBS buffer with 0.09% (w/v) sodium azide and 2% sucrose. <i>Note that this product is shipped as lyophilized powder to China customers.</i>
Concentration:	lot specific
Purification:	Affinity purified
Conjugation:	Unconjugated
Storage:	For short term use, store at 2-8°C up to 1 week. For long term storage, store at -20°C in small aliquots to prevent freeze-thaw cycles.
Stability:	Shelf life: one year from despatch.
Predicted Protein Size:	662
Gene Name:	epsin 1
Database Link:	<a href="#">NP_001123543.1</a> <a href="#">Entrez Gene 29924 Human</a> <a href="#">Q9Y6I3-1</a>
Background:	The protein encoded by this gene binds clathrin and is involved in the endocytosis of clathrin-coated vesicles. Three transcript variants encoding different isoforms have been found for this gene.
Synonyms:	EPN1
Protein Pathways:	Endocytosis



[View online »](#)

## Product images:



Host: Rabbit  
Target Name: EPN1  
Sample Type: Leiomyosarcoma Tumor Lysate  
Antibody Dilution: 1.0 $\mu$ g/ml

Host: Rabbit  
Target Name: EPN1  
Sample Tissue: Human Leiomyosarcoma Tumor lysates  
Antibody Dilution: 1 $\mu$ g/ml