

Product datasheet for **TA361691**

CORO1B Rabbit Polyclonal Antibody

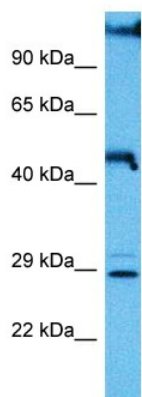
Product data:

Product Type:	Primary Antibodies
Applications:	WB
Reactivity:	Human
Host:	Rabbit
Clonality:	Polyclonal
Immunogen:	The immunogen is a synthetic peptide directed towards the C terminal region of human CORO1B
Formulation:	Liquid. Purified antibody supplied in 1x PBS buffer with 0.09% (w/v) sodium azide and 2% sucrose. <i>Note that this product is shipped as lyophilized powder to China customers.</i>
Concentration:	lot specific
Purification:	Affinity purified
Conjugation:	Unconjugated
Storage:	For short term use, store at 2-8°C up to 1 week. For long term storage, store at -20°C in small aliquots to prevent freeze-thaw cycles.
Stability:	Shelf life: one year from despatch.
Predicted Protein Size:	489
Gene Name:	coronin 1B
Database Link:	NP_001018080.1 Entrez Gene 57175 Human Q9BR76
Background:	Members of the coronin family, such as CORO1B, are WD repeat-containing actin-binding proteins that regulate cell motility.
Synonyms:	coronin-2; DKFZp762l166



[View online »](#)

Product images:



Host: Rabbit

Target Name: CORO1B

Sample Type: Lung Tumor Lysate

Antibody Dilution: 1.0 μ g/ml

Host: Rabbit

Target Name: CORO1B

Sample Tissue: Human Lung Tumor lysates

Antibody Dilution: 1 μ g/ml