

Product datasheet for **TA361690**

AZI2 Rabbit Polyclonal Antibody

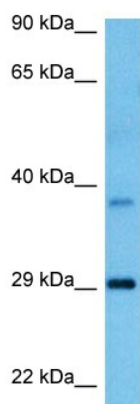
Product data:

Product Type:	Primary Antibodies
Applications:	WB
Reactivity:	Human
Host:	Rabbit
Clonality:	Polyclonal
Immunogen:	The immunogen is a synthetic peptide directed towards the N terminal region of human AZI2
Specificity:	Expected reactivity: Human
Formulation:	Liquid. Purified antibody supplied in 1x PBS buffer with 0.09% (w/v) sodium azide and 2% sucrose. <i>Note that this product is shipped as lyophilized powder to China customers.</i>
Concentration:	lot specific
Purification:	Affinity purified
Conjugation:	Unconjugated
Storage:	For short term use, store at 2-8°C up to 1 week. For long term storage, store at -20°C in small aliquots to prevent freeze-thaw cycles.
Stability:	Shelf life: one year from despatch.
Predicted Protein Size:	28 kDa
Gene Name:	5-azacytidine induced 2
Database Link:	NP_001127904.1 Entrez Gene 64343 Human Q9H6S1-4
Background:	AZI2, or NAP1, contributes to the activation of NFκB-dependent gene expression by activating IKK-related kinases, such as NAK.
Synonyms:	AZ2; FLJ21939; NAP1; OTTHUMP00000208433; TILP
Protein Pathways:	RIG-I-like receptor signaling pathway



[View online »](#)

Product images:



Host: Rabbit
Target Name: AZI2
Sample Type: Uterus Tumor Lysate
Antibody Dilution: 1.0 µg/ml

Host: Rabbit
Target Name: AZI2
Sample Tissue: Human Uterus Tumor lysates
Antibody Dilution: 1 µg/ml