

Product datasheet for **TA361686**

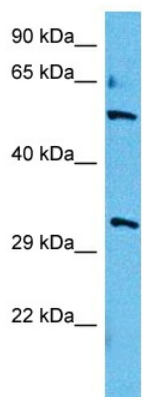
ACTR8 Rabbit Polyclonal Antibody

Product data:

Product Type:	Primary Antibodies
Applications:	WB
Reactivity:	Human
Host:	Rabbit
Clonality:	Polyclonal
Immunogen:	The immunogen is a synthetic peptide directed towards the middle region of human ACTR8
Specificity:	Expected reactivity: Human
Formulation:	Liquid. Purified antibody supplied in 1x PBS buffer with 0.09% (w/v) sodium azide and 2% sucrose.
Concentration:	lot specific
Purification:	Affinity purified
Conjugation:	Unconjugated
Storage:	For short term use, store at 2-8°C up to 1 week. For long term storage, store at -20°C in small aliquots to prevent freeze-thaw cycles.
Stability:	Shelf life: one year from despatch.
Predicted Protein Size:	56 kDa
Gene Name:	ARP8 actin-related protein 8 homolog
Database Link:	NP_075050.3 Entrez Gene 93973 Human Q9H981-2
Background:	Plays an important role in the functional organization of mitotic chromosomes. Exhibits low basal ATPase activity, and unable to polymerize. Proposed core component of the chromatin remodeling INO80 complex which is involved in transcriptional regulation, DNA reoplication and probably DNA repair. Required for the recruitment of INO80 (and probably the INO80 complex) to sites of DNA damage. Strongly prefer nucleosomes and H3-H4 tetramers over H2A-H2B dimers, suggesting it may act as a nucleosome recognition module within the complex.
Synonyms:	ARP8; FLJ12934; FLJ22579; INO80N



[View online »](#)

Product images:

Host: Rabbit
Target Name: ACTR8
Sample Type: HepG2 Cell Lysate
Antibody Dilution: 1.0 μ g/ml

Host: Rabbit
Target Name: ACTR8
Sample Tissue: Human HepG2 Whole Cell lysates
Antibody Dilution: 1 μ g/ml