

## Product datasheet for **TA361684**

### AVL9 Rabbit Polyclonal Antibody

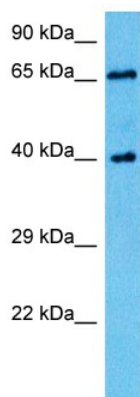
#### Product data:

Product Type:	Primary Antibodies
Applications:	WB
Reactivity:	Human
Host:	Rabbit
Clonality:	Polyclonal
Immunogen:	The immunogen is a synthetic peptide directed towards the middle region of human AVL9
Formulation:	Liquid. Purified antibody supplied in 1x PBS buffer with 0.09% (w/v) sodium azide and 2% sucrose. <i>Note that this product is shipped as lyophilized powder to China customers.</i>
Concentration:	lot specific
Purification:	Affinity purified
Conjugation:	Unconjugated
Storage:	For short term use, store at 2-8°C up to 1 week. For long term storage, store at -20°C in small aliquots to prevent freeze-thaw cycles.
Stability:	Shelf life: one year from despatch.
Predicted Protein Size:	591
Gene Name:	AVL9 cell migration associated
Database Link:	<a href="#">NP_055875.1</a> <a href="#">Entrez Gene 23080 Human</a> <a href="#">Q8NBF6-2</a>
Background:	Functions in cell migration.
Synonyms:	DKFZp686G0344; KIAA0241



[View online »](#)

## Product images:



Host: Rabbit  
Target Name: AVL9  
Sample Type: 293T Cell Lysate  
Antibody Dilution: 1.0 $\mu$ g/ml

Host: Rabbit  
Target Name: AVL9  
Sample Tissue: Human 293T Whole Cell lysates  
Antibody Dilution: 1  $\mu$ g/ml