

Product datasheet for **TA361683**

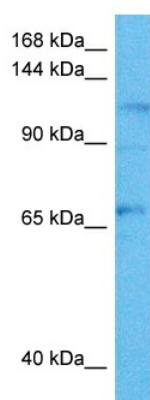
ITIH2 Rabbit Polyclonal Antibody

Product data:

Product Type:	Primary Antibodies
Applications:	WB
Reactivity:	Human
Host:	Rabbit
Clonality:	Polyclonal
Immunogen:	The immunogen is a synthetic peptide directed towards the C terminal region of human ITIH2
Specificity:	Expected reactivity: Human
Formulation:	Liquid. Purified antibody supplied in 1x PBS buffer with 0.09% (w/v) sodium azide and 2% sucrose.
Concentration:	lot specific
Purification:	Affinity purified
Conjugation:	Unconjugated
Storage:	For short term use, store at 2-8°C up to 1 week. For long term storage, store at -20°C in small aliquots to prevent freeze-thaw cycles.
Stability:	Shelf life: one year from despatch.
Predicted Protein Size:	106 kDa
Gene Name:	inter-alpha-trypsin inhibitor heavy chain 2
Database Link:	NP_002207.2 Entrez Gene 3698 Human P19823
Background:	The inter-alpha-trypsin inhibitors (ITI) are a family of structurally related plasma serine protease inhibitors involved in extracellular matrix stabilization and in prevention of tumor metastasis. The ITI family contains multiple proteins made up of a light chain and a variable number of heavy chains.
Synonyms:	H2P; IGHEP2; SHAP



[View online »](#)

Product images:

Host: Rabbit
Target Name: ITIH2
Sample Type: 786-0 Cell Lysate
Antibody Dilution: 1.0 μ g/ml

Host: Rabbit
Target Name: ITIH2
Sample Tissue: Human 786-0 Whole Cell lysates
Antibody Dilution: 1 μ g/ml