

Product datasheet for **TA361678**

PHF22 (INTS12) Rabbit Polyclonal Antibody

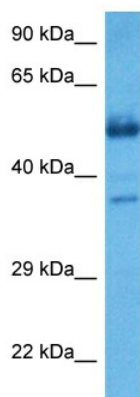
Product data:

Product Type:	Primary Antibodies
Applications:	WB
Reactivity:	Human
Host:	Rabbit
Clonality:	Polyclonal
Immunogen:	The immunogen is a synthetic peptide directed towards the C terminal region of human INTS12
Specificity:	Expected reactivity: Human
Formulation:	Liquid. Purified antibody supplied in 1x PBS buffer with 0.09% (w/v) sodium azide and 2% sucrose.
Concentration:	lot specific
Purification:	Affinity purified
Conjugation:	Unconjugated
Storage:	For short term use, store at 2-8°C up to 1 week. For long term storage, store at -20°C in small aliquots to prevent freeze-thaw cycles.
Stability:	Shelf life: one year from despatch.
Predicted Protein Size:	50 kDa
Gene Name:	integrator complex subunit 12
Database Link:	NP_001135943.1 Entrez Gene 57117 Human Q96CB8
Background:	INTS12 is a subunit of the Integrator complex, which associates with the C-terminal domain of RNA polymerase II large subunit and mediates 3-prime end processing of small nuclear RNAs U1 and U2.
Synonyms:	INT12; OTTHUMP00000161875; PHF22; SBBI22
Protein Families:	Druggable Genome, Transcription Factors



[View online »](#)

Product images:



Host: Rabbit
Target Name: INTS12
Sample Type: Uterus Tumor Lysate
Antibody Dilution: 1.0µg/ml

Host: Rabbit
Target Name: INTS12
Sample Tissue: Human Uterus Tumor lysates
Antibody Dilution: 1ug/ml