

## Product datasheet for **TA361675**

### DENND2D Rabbit Polyclonal Antibody

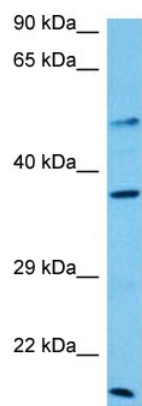
#### Product data:

Product Type:	Primary Antibodies
Applications:	WB
Reactivity:	Human
Host:	Rabbit
Clonality:	Polyclonal
Immunogen:	The immunogen is a synthetic peptide directed towards the middle region of human DENND2D
Specificity:	<b>Expected reactivity:</b> Human
Formulation:	Liquid. Purified antibody supplied in 1x PBS buffer with 0.09% (w/v) sodium azide and 2% sucrose.
Concentration:	lot specific
Purification:	Affinity purified
Conjugation:	Unconjugated
Storage:	For short term use, store at 2-8°C up to 1 week. For long term storage, store at -20°C in small aliquots to prevent freeze-thaw cycles.
Stability:	Shelf life: one year from despatch.
Predicted Protein Size:	51 kDa
Gene Name:	DENN domain containing 2D
Database Link:	<a href="#">NP_001258762.1</a> <a href="#">Entrez Gene 79961 Human</a> <a href="#">Q9H6A0</a>
Background:	Guanine nucleotide exchange factor (GEF) which may activate RAB9A and RAB9B. Promotes the exchange of GDP to GTP, converting inactive GDP-bound Rab proteins into their active GTP-bound form.
Synonyms:	FLJ22457; RP5-1180E21.2



[View online »](#)

## Product images:



Host: Rabbit  
Target Name: DENND2D  
Sample Type: Ovary Tumor Lysate  
Antibody Dilution: 1.0µg/ml

Host: Rabbit  
Target Name: DENND2D  
Sample Tissue: Human Ovary Tumor lysates  
Antibody Dilution: 1ug/ml