

Product datasheet for **TA361674**

Ube1L (UBA7) Rabbit Polyclonal Antibody

Product data:

Product Type:	Primary Antibodies
Applications:	WB
Reactivity:	Human
Host:	Rabbit
Clonality:	Polyclonal
Immunogen:	The immunogen is a synthetic peptide directed towards the middle region of Human UBA7
Specificity:	Expected reactivity: Human
Formulation:	Liquid. Purified antibody supplied in 1x PBS buffer with 0.09% (w/v) sodium azide and 2% sucrose. <i>Note that this product is shipped as lyophilized powder to China customers.</i>
Concentration:	lot specific
Purification:	Affinity purified
Conjugation:	Unconjugated
Storage:	For short term use, store at 2-8°C up to 1 week. For long term storage, store at -20°C in small aliquots to prevent freeze-thaw cycles.
Stability:	Shelf life: one year from despatch.
Predicted Protein Size:	111 kDa
Gene Name:	ubiquitin like modifier activating enzyme 7
Database Link:	NP_003326.2 Entrez Gene 7318 Human P41226



[View online »](#)

Background:

The modification of proteins with ubiquitin is an important cellular mechanism for targeting abnormal or short-lived proteins for degradation. Ubiquitination involves at least three classes of enzymes: ubiquitin-activating enzymes, or E1s, ubiquitin-conjugating enzymes, or E2s, and ubiquitin-protein ligases, or E3s. This gene encodes a member of the E1 ubiquitin-activating enzyme family. The encoded enzyme is a retinoid target that triggers promyelocytic leukemia (PML)/retinoic acid receptor alpha (RARalpha) degradation and apoptosis in acute promyelocytic leukemia, where it is involved in the conjugation of the ubiquitin-like interferon-stimulated gene 15 protein.

Synonyms:

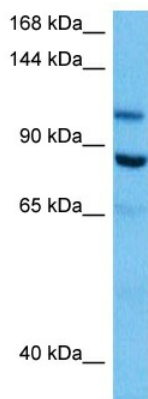
D8; MGC12713; UBA1B; UBE1L; UBE2

Protein Families:

Druggable Genome

Protein Pathways:

Parkinson's disease, Ubiquitin mediated proteolysis

Product images:

Host: Rabbit
Target Name: UBA7
Sample Type: Mesenchymoma Tumor Lysate
Antibody Dilution: 1.0µg/ml

Host: Rabbit
Target Name: UBA7
Sample Tissue: Human Mesenchymoma Tumor lysates
Antibody Dilution: 1ug/ml