

## Product datasheet for **TA361669**

### SLC25A23 Rabbit Polyclonal Antibody

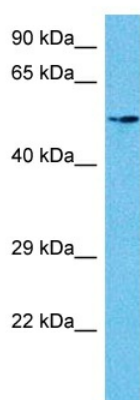
#### Product data:

Product Type:	Primary Antibodies
Applications:	WB
Reactivity:	Human
Host:	Rabbit
Clonality:	Polyclonal
Immunogen:	The immunogen is a synthetic peptide directed towards the N terminal region of human SLC25A23
Specificity:	<b>Expected reactivity:</b> Human
Formulation:	Liquid. Purified antibody supplied in 1x PBS buffer with 0.09% (w/v) sodium azide and 2% sucrose.
Concentration:	lot specific
Purification:	Affinity purified
Conjugation:	Unconjugated
Storage:	For short term use, store at 2-8°C up to 1 week. For long term storage, store at -20°C in small aliquots to prevent freeze-thaw cycles.
Stability:	Shelf life: one year from despatch.
Predicted Protein Size:	53 kDa
Gene Name:	solute carrier family 25 member 23
Database Link:	<a href="#">NP_077008.2</a> <a href="#">Entrez Gene 79085 Human</a> <a href="#">Q9BV35-3</a>
Background:	Calcium-dependent mitochondrial solute carrier. Mitochondrial solute carriers shuttle metabolites, nucleotides, and cofactors through the mitochondrial inner membrane. May act as a ATP-Mg/Pi exchanger that mediates the transport of Mg-ATP in exchange for phosphate, catalyzing the net uptake or efflux of adenine nucleotides into or from the mitochondria. Acts as a regulator of mitochondrial calcium uptake via interaction with MCU and MICU1.
Synonyms:	APC2; FLJ30339; MCSC2; MGC2615; SCaMC-3; SCAMC3
Protein Families:	Druggable Genome



[View online »](#)

## Product images:



Host: Rabbit  
Target Name: SLC25A23  
Sample Type: Neurofibroma Tumor Lysate  
Antibody Dilution: 1.0 $\mu$ g/ml

Host: Rabbit  
Target Name: SLC25A23  
Sample Tissue: Human Neurofibroma Tumor lysates  
Antibody Dilution: 1 $\mu$ g/ml