

## Product datasheet for **TA361667**

### SH2D4A Rabbit Polyclonal Antibody

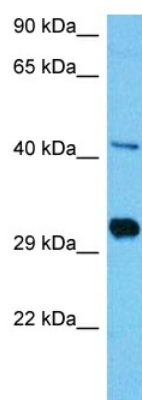
#### Product data:

Product Type:	Primary Antibodies
Applications:	WB
Reactivity:	Human
Host:	Rabbit
Clonality:	Polyclonal
Immunogen:	The immunogen is a synthetic peptide directed towards the N terminal region of human SH2D4A
Specificity:	<b>Expected reactivity:</b> Human
Formulation:	Liquid. Purified antibody supplied in 1x PBS buffer with 0.09% (w/v) sodium azide and 2% sucrose. <i>Note that this product is shipped as lyophilized powder to China customers.</i>
Concentration:	lot specific
Purification:	Affinity purified
Conjugation:	Unconjugated
Storage:	For short term use, store at 2-8°C up to 1 week. For long term storage, store at -20°C in small aliquots to prevent freeze-thaw cycles.
Stability:	Shelf life: one year from despatch.
Predicted Protein Size:	44 kDa
Gene Name:	SH2 domain containing 4A
Database Link:	<a href="#">NP_001167630.1</a> <a href="#">Entrez Gene 63898 Human</a> <a href="#">Q9H788-2</a>
Background:	Inhibits estrogen-induced cell proliferation by competing with PLCG for binding to ESR1, blocking the effect of estrogen on PLCG and repressing estrogen-induced proliferation. May play a role in T-cell development and function.
Synonyms:	FLJ20967; SH2A



[View online »](#)

## Product images:



Host: Rabbit  
Target Name: SH2D4A  
Sample Type: HepG2 Cell Lysate  
Antibody Dilution: 1.0 $\mu$ g/ml

Host: Rabbit  
Target Name: SH2D4A  
Sample Tissue: Human HepG2 Whole Cell lysates  
Antibody Dilution: 1  $\mu$ g/ml