

## Product datasheet for **TA361665**

### RQCD1 (CNOT9) Rabbit Polyclonal Antibody

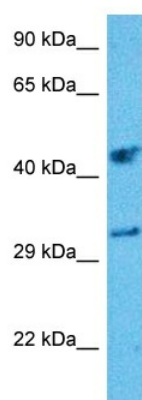
#### Product data:

Product Type:	Primary Antibodies
Applications:	WB
Reactivity:	Human
Host:	Rabbit
Clonality:	Polyclonal
Immunogen:	The immunogen is a synthetic peptide directed towards the N terminal region of human RQCD1
Specificity:	<b>Expected reactivity:</b> Human
Formulation:	Liquid. Purified antibody supplied in 1x PBS buffer with 0.09% (w/v) sodium azide and 2% sucrose. <i>Note that this product is shipped as lyophilized powder to China customers.</i>
Concentration:	lot specific
Purification:	Affinity purified
Conjugation:	Unconjugated
Storage:	For short term use, store at 2-8°C up to 1 week. For long term storage, store at -20°C in small aliquots to prevent freeze-thaw cycles.
Stability:	Shelf life: one year from despatch.
Predicted Protein Size:	32 kDa
Gene Name:	CCR4-NOT transcription complex subunit 9
Database Link:	<a href="#">NP_001258563.1</a> <a href="#">Entrez Gene 9125 Human</a> <a href="#">Q92600</a>
Background:	This gene encodes a member of the highly conserved RCD1 protein family. The encoded protein is a transcriptional cofactor and a core protein of the CCR4-NOT complex. It may be involved in signal transduction as well as retinoic acid-regulated cell differentiation and development. Alternatively spliced transcript variants have been described for this gene.
Protein Pathways:	RNA degradation



[View online »](#)

## Product images:



Host: Rabbit  
Target Name: RQCD1  
Sample Type: Neurofibroma Tumor Lysate  
Antibody Dilution: 1.0 $\mu$ g/ml

Host: Rabbit  
Target Name: RQCD1  
Sample Tissue: Human Neurofibroma Tumor  
lysates  
Antibody Dilution: 1 ug/ml