

Product datasheet for **TA361663**

Myosin Phosphatase 2 (PPP1R12B) Rabbit Polyclonal Antibody

Product data:

Product Type:	Primary Antibodies
Applications:	WB
Reactivity:	Human
Host:	Rabbit
Clonality:	Polyclonal
Immunogen:	The immunogen is a synthetic peptide directed towards the middle region of human PPP1R12B
Specificity:	Expected reactivity: Human
Formulation:	Liquid. Purified antibody supplied in 1x PBS buffer with 0.09% (w/v) sodium azide and 2% sucrose. <i>Note that this product is shipped as lyophilized powder to China customers.</i>
Concentration:	lot specific
Purification:	Affinity purified
Conjugation:	Unconjugated
Storage:	For short term use, store at 2-8°C up to 1 week. For long term storage, store at -20°C in small aliquots to prevent freeze-thaw cycles.
Stability:	Shelf life: one year from despatch.
Predicted Protein Size:	56 kDa
Gene Name:	protein phosphatase 1 regulatory subunit 12B
Database Link:	NP_001161329.1 Entrez Gene 4660 Human O60237-5



[View online »](#)

Background:

Myosin phosphatase is a protein complex comprised of three subunits: a catalytic subunit (PP1c-delta, protein phosphatase 1, catalytic subunit delta), a large regulatory subunit (MYPT, myosin phosphatase target) and small regulatory subunit (sm-M20). Two isoforms of MYPT have been isolated--MYPT1 and MYPT2, the first of which is widely expressed, and the second of which may be specific to heart, skeletal muscle, and brain. Each of the MYPT isoforms functions to bind PP1c-delta and increase phosphatase activity. This locus encodes both MYTP2 and M20. Alternatively spliced transcript variants encoding different isoforms have been identified. Related pseudogenes have been defined on the Y chromosome.

Synonyms:

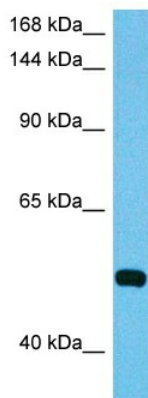
FLJ40942; MGC87886; MGC131980; MYPT2

Protein Families:

Druggable Genome

Protein Pathways:

Vascular smooth muscle contraction

Product images:

Host: Rabbit

Target Name: PPP1R12B

Sample Type: Mesenchymoma Tumor Lysate

Antibody Dilution: 1.0µg/ml

Host: Rabbit

Target Name: PPP1R12B

Sample Tissue: Human Mesenchymoma Tumor lysates

Antibody Dilution: 1ug/ml