

Product datasheet for **TA361662**

PNRC1 Rabbit Polyclonal Antibody

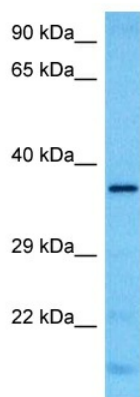
Product data:

Product Type:	Primary Antibodies
Applications:	WB
Reactivity:	Human
Host:	Rabbit
Clonality:	Polyclonal
Immunogen:	The immunogen is a synthetic peptide directed towards the middle region of Human PNRC1
Specificity:	Expected reactivity: Human
Formulation:	Liquid. Purified antibody supplied in 1x PBS buffer with 0.09% (w/v) sodium azide and 2% sucrose.
Concentration:	lot specific
Purification:	Affinity purified
Conjugation:	Unconjugated
Storage:	For short term use, store at 2-8°C up to 1 week. For long term storage, store at -20°C in small aliquots to prevent freeze-thaw cycles.
Stability:	Shelf life: one year from despatch.
Predicted Protein Size:	35 kDa
Gene Name:	proline rich nuclear receptor coactivator 1
Database Link:	NP_006804.1 Entrez Gene 10957 Human Q12796
Background:	Nuclear receptor coactivator. May play a role in signal transduction.
Synonyms:	B4-2; PNAS-145; PROL2; PRR2; RP11-63L7.5
Protein Families:	Druggable Genome, Transcription Factors



[View online »](#)

Product images:



Host: Rabbit
Target Name: PNRC1
Sample Type: K562 Cell Lysate
Antibody Dilution: 1.0 μ g/ml

Host: Rabbit
Target Name: PNRC1
Sample Tissue: Human K562 Whole Cell lysates
Antibody Dilution: 1 μ g/ml