

Product datasheet for **TA361658**

HSPA14 Rabbit Polyclonal Antibody

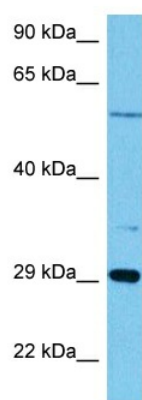
Product data:

Product Type:	Primary Antibodies
Applications:	WB
Reactivity:	Human
Host:	Rabbit
Clonality:	Polyclonal
Immunogen:	The immunogen is a synthetic peptide directed towards the C terminal region of Human HSPA14
Specificity:	Expected reactivity: Human
Formulation:	Liquid. Purified antibody supplied in 1x PBS buffer with 0.09% (w/v) sodium azide and 2% sucrose. <i>Note that this product is shipped as lyophilized powder to China customers.</i>
Concentration:	lot specific
Purification:	Affinity purified
Conjugation:	Unconjugated
Storage:	For short term use, store at 2-8°C up to 1 week. For long term storage, store at -20°C in small aliquots to prevent freeze-thaw cycles.
Stability:	Shelf life: one year from despatch.
Predicted Protein Size:	55 kDa
Gene Name:	heat shock protein family A (Hsp70) member 14
Database Link:	NP_057383.2 Entrez Gene 51182 Human Q0VDF9
Background:	Component of the ribosome-associated complex (RAC), a complex involved in folding or maintaining nascent polypeptides in a folding-competent state. In the RAC complex, binds to the nascent polypeptide chain, while DNAJC2 stimulates its ATPase activity.
Synonyms:	HSP60; HSP70-4; HSP70L1; MGC131990
Protein Families:	Druggable Genome, Stem cell - Pluripotency



[View online »](#)

Product images:



Host: Rabbit
Target Name: HSPA14
Sample Type: COLO205 Cell Lysate
Antibody Dilution: 1.0 μ g/ml

Host: Rabbit
Target Name: HSPA14
Sample Tissue: Human COLO205 Whole Cell lysates
Antibody Dilution: 1 μ g/ml