

Product datasheet for **TA361652**

Deoxyribonuclease I like 1 (DNASE1L1) Rabbit Polyclonal Antibody

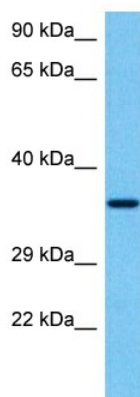
Product data:

Product Type:	Primary Antibodies
Applications:	WB
Reactivity:	Human
Host:	Rabbit
Clonality:	Polyclonal
Immunogen:	The immunogen is a synthetic peptide directed towards the middle region of Human DNASE1L1
Specificity:	Expected reactivity: Human
Formulation:	Liquid. Purified antibody supplied in 1x PBS buffer with 0.09% (w/v) sodium azide and 2% sucrose. <i>Note that this product is shipped as lyophilized powder to China customers.</i>
Concentration:	lot specific
Purification:	Affinity purified
Conjugation:	Unconjugated
Storage:	For short term use, store at 2-8°C up to 1 week. For long term storage, store at -20°C in small aliquots to prevent freeze-thaw cycles.
Stability:	Shelf life: one year from despatch.
Predicted Protein Size:	34 kDa
Gene Name:	deoxyribonuclease I-like 1
Database Link:	NP_001009932.1 Entrez Gene 1774 Human P49184
Background:	This gene encodes a deoxyribonuclease protein that shows high sequence similarity to DNase I. The encoded protein is localized to the endoplasmic reticulum and modified by N-linked glycosylation. Alternate transcriptional splice variants encoding the same protein have been observed.
Synonyms:	DNAS1L1; DNASEX; DNL1L; OTTHUMP00000031940; OTTHUMP00000032113; XIB



[View online »](#)

Product images:



Host: Rabbit
Target Name: DNASE1L1
Sample Type: Du145 Cell Lysate
Antibody Dilution: 1.0 μ g/ml

Host: Rabbit
Target Name: DNASE1L1
Sample Tissue: Human Du145 Whole Cell lysates
Antibody Dilution: 1 μ g/ml