

Product datasheet for **TA361651**

CLIP170 (CLIP1) Rabbit Polyclonal Antibody

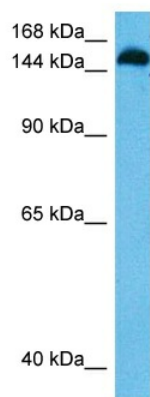
Product data:

Product Type:	Primary Antibodies
Applications:	WB
Reactivity:	Human
Host:	Rabbit
Clonality:	Polyclonal
Immunogen:	The immunogen is a synthetic peptide directed towards the C terminal region of human CLIP1
Specificity:	Expected reactivity: Human
Formulation:	Liquid. Purified antibody supplied in 1x PBS buffer with 0.09% (w/v) sodium azide and 2% sucrose. <i>Note that this product is shipped as lyophilized powder to China customers.</i>
Concentration:	lot specific
Purification:	Affinity purified
Conjugation:	Unconjugated
Storage:	For short term use, store at 2-8°C up to 1 week. For long term storage, store at -20°C in small aliquots to prevent freeze-thaw cycles.
Stability:	Shelf life: one year from despatch.
Predicted Protein Size:	153 kDa
Gene Name:	CAP-Gly domain containing linker protein 1
Database Link:	NP_001234926.1 Entrez Gene 6249 Human P30622-2
Background:	The protein encoded by this gene links endocytic vesicles to microtubules. This gene is highly expressed in Reed-Sternberg cells of Hodgkin disease. Several transcript variants encoding different isoforms have been found for this gene.
Synonyms:	CLIP; CLIP-170; CLIP170; CYLN1; MGC131604; Restin; RSN



[View online »](#)

Product images:



Host: Rabbit
Target Name: CLIP1
Sample Type: 293T Cell Lysate
Antibody Dilution: 1.0 μ g/ml

Host: Rabbit
Target Name: CLIP1
Sample Tissue: Human 293T Whole Cell lysates
Antibody Dilution: 1 μ g/ml