

## Product datasheet for **TA361647**

### APOL6 Rabbit Polyclonal Antibody

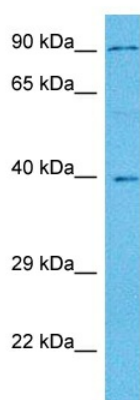
#### Product data:

Product Type:	Primary Antibodies
Applications:	WB
Reactivity:	Human
Host:	Rabbit
Clonality:	Polyclonal
Immunogen:	The immunogen is a synthetic peptide directed towards the middle region of human APOL6
Specificity:	<b>Expected reactivity:</b> Human
Formulation:	Liquid. Purified antibody supplied in 1x PBS buffer with 0.09% (w/v) sodium azide and 2% sucrose. <i>Note that this product is shipped as lyophilized powder to China customers.</i>
Concentration:	lot specific
Purification:	Affinity purified
Conjugation:	Unconjugated
Storage:	For short term use, store at 2-8°C up to 1 week. For long term storage, store at -20°C in small aliquots to prevent freeze-thaw cycles.
Stability:	Shelf life: one year from despatch.
Predicted Protein Size:	37 kDa
Gene Name:	apolipoprotein L6
Database Link:	<a href="#">NP_085144.1</a> <a href="#">Entrez Gene 80830 Human</a> <a href="#">Q9BWW8</a>
Background:	This gene is a member of the apolipoprotein L gene family. The encoded protein is found in the cytoplasm, where it may affect the movement of lipids or allow the binding of lipids to organelles.
Synonyms:	APOL-VI; APOLVI; DKFZp667M075; FLJ38562; FLJ90164; MGC57495



[View online »](#)

## Product images:



Host: Rabbit  
Target Name: APOL6  
Sample Type: Lung Tumor Lysate  
Antibody Dilution: 1.0 $\mu$ g/ml

Host: Rabbit  
Target Name: APOL6  
Sample Tissue: Human Lung Tumor lysates  
Antibody Dilution: 1 $\mu$ g/ml