

## Product datasheet for **TA361646**

### ALG5 Rabbit Polyclonal Antibody

#### Product data:

Product Type:	Primary Antibodies
Applications:	WB
Reactivity:	Human
Host:	Rabbit
Clonality:	Polyclonal
Immunogen:	The immunogen is a synthetic peptide directed towards the middle region of human ALG5
Specificity:	<b>Expected reactivity:</b> Human
Formulation:	Liquid. Purified antibody supplied in 1x PBS buffer with 0.09% (w/v) sodium azide and 2% sucrose. <i>Note that this product is shipped as lyophilized powder to China customers.</i>
Concentration:	lot specific
Purification:	Affinity purified
Conjugation:	Unconjugated
Storage:	For short term use, store at 2-8°C up to 1 week. For long term storage, store at -20°C in small aliquots to prevent freeze-thaw cycles.
Stability:	Shelf life: one year from despatch.
Predicted Protein Size:	35 kDa
Gene Name:	ALG5, dolichyl-phosphate beta-glucosyltransferase
Database Link:	<a href="#">NP_001135836.1</a> <a href="#">Entrez Gene 29880 Human</a> <a href="#">Q9Y673</a>
Background:	This gene encodes a member of the glycosyltransferase 2 family. The encoded protein participates in glycosylation of the oligomannose core in N-linked glycosylation of proteins. The addition of glucose residues to the oligomannose core is necessary to ensure substrate recognition, and therefore, effectual transfer of the oligomannose core to the nascent glycoproteins. Multiple transcript variants encoding different isoforms have been found for this gene.
Synonyms:	bA421P11.2; DolP-glucosyltransferase; RP11-421P11.2

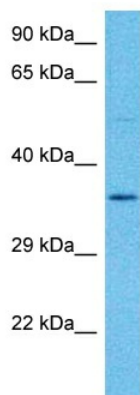


[View online »](#)

Protein Families: Transmembrane

Protein Pathways: Metabolic pathways, N-Glycan biosynthesis

### Product images:



Host: Rabbit  
Target Name: ALG5  
Sample Type: HCT116 Cell Lysate  
Antibody Dilution: 1.0 $\mu$ g/ml

Host: Rabbit  
Target Name: ALG5  
Sample Tissue: Human HCT116 Whole Cell lysates  
Antibody Dilution: 1 $\mu$ g/ml