

Product datasheet for **TA361643**

NUP37 Rabbit Polyclonal Antibody

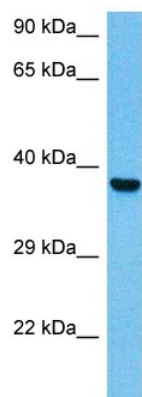
Product data:

Product Type:	Primary Antibodies
Applications:	WB
Reactivity:	Human
Host:	Rabbit
Clonality:	Polyclonal
Immunogen:	The immunogen is a synthetic peptide directed towards the middle region of human NUP37
Specificity:	Expected reactivity: Human
Formulation:	Liquid. Purified antibody supplied in 1x PBS buffer with 0.09% (w/v) sodium azide and 2% sucrose.
Concentration:	lot specific
Purification:	Affinity purified
Conjugation:	Unconjugated
Storage:	For short term use, store at 2-8°C up to 1 week. For long term storage, store at -20°C in small aliquots to prevent freeze-thaw cycles.
Stability:	Shelf life: one year from despatch.
Predicted Protein Size:	37 kDa
Gene Name:	nucleoporin 37kDa
Database Link:	NP_076962.2 Entrez Gene 79023 Human Q8NFH4
Background:	Nuclear pore complexes (NPCs) are used for transporting macromolecules between the cytoplasm and the nucleus. NPCs consist of multiple copies of 30 distinct proteins (nucleoporins), which assemble into biochemically-separable subcomplexes. The protein encoded by this gene is part of a subcomplex (Nup107-160) that is required for proper NPC function as well as for normal kinetochore-microtubule interaction and mitosis.
Synonyms:	FLJ22618; MGC5585; p37



[View online »](#)

Product images:



Host: Rabbit
Target Name: NUP37
Sample Type: DLD1 Cell Lysate
Antibody Dilution: 1.0 μ g/ml

Host: Rabbit
Target Name: NUP37
Sample Tissue: Human DLD1 Whole Cell lysates
Antibody Dilution: 1 μ g/ml