

## Product datasheet for TA361642

### BPHL Rabbit Polyclonal Antibody

#### Product data:

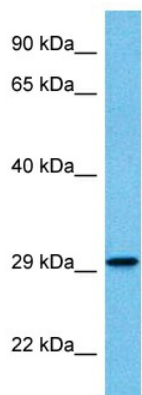
Product Type:	Primary Antibodies
Applications:	WB
Reactivity:	Human
Host:	Rabbit
Clonality:	Polyclonal
Immunogen:	The immunogen is a synthetic peptide directed towards the middle region of human BPHL
Specificity:	<b>Expected reactivity:</b> Human
Formulation:	Liquid. Purified antibody supplied in 1x PBS buffer with 0.09% (w/v) sodium azide and 2% sucrose.
Concentration:	lot specific
Purification:	Affinity purified
Conjugation:	Unconjugated
Storage:	For short term use, store at 2-8°C up to 1 week. For long term storage, store at -20°C in small aliquots to prevent freeze-thaw cycles.
Stability:	Shelf life: one year from despatch.
Predicted Protein Size:	30 kDa
Gene Name:	biphenyl hydrolase-like (serine hydrolase)
Database Link:	<a href="#">NP_004323.2</a> <a href="#">Entrez Gene 670 Human</a> <a href="#">Q86WA6-2</a>
Background:	This gene encodes a member of the serine protease family of hydrolytic enzymes which contain a serine in their active site. The encoded protein may play a role in activation of the antiviral prodrug valacyclovir. Alternatively spliced transcript variants have been described.



**Synonyms:** Bph-rp; MCNAA; MGC41865; MGC125930; VACVASE; valacyclovirase

**Protein Families:** Druggable Genome

**Product images:**



Host: Rabbit  
Target Name: BPHL  
Sample Type: Neurofibroma Tumor Lysate  
Antibody Dilution: 1.0µg/ml

Host: Rabbit  
Target Name: BPHL  
Sample Tissue: Human Neurofibroma Tumor lysates  
Antibody Dilution: 1ug/ml