

## Product datasheet for **TA361641**

### PAFAH2 Rabbit Polyclonal Antibody

#### Product data:

Product Type:	Primary Antibodies
Applications:	WB
Reactivity:	Human
Host:	Rabbit
Clonality:	Polyclonal
Immunogen:	The immunogen is a synthetic peptide directed towards the C terminal region of human PAFAH2
Specificity:	<b>Expected reactivity:</b> Human
Formulation:	Liquid. Purified antibody supplied in 1x PBS buffer with 0.09% (w/v) sodium azide and 2% sucrose. <i>Note that this product is shipped as lyophilized powder to China customers.</i>
Concentration:	lot specific
Purification:	Affinity purified
Conjugation:	Unconjugated
Storage:	For short term use, store at 2-8°C up to 1 week. For long term storage, store at -20°C in small aliquots to prevent freeze-thaw cycles.
Stability:	Shelf life: one year from despatch.
Predicted Protein Size:	43 kDa
Gene Name:	platelet activating factor acetylhydrolase 2
Database Link:	<a href="#">NP_000428.2</a> <a href="#">Entrez Gene 5051 Human</a> <a href="#">Q99487</a>



[View online »](#)

**Background:**

This gene encodes platelet-activating factor acetylhydrolase isoform 2, a single-subunit intracellular enzyme that catalyzes the removal of the acetyl group at the SN-2 position of platelet-activating factor (identified as 1-O-alkyl-2-acetyl-sn-glycerol-3-phosphorylcholine). However, this lipase exhibits a broader substrate specificity than simply platelet activating factor. Two other isoforms of intracellular platelet-activating factor acetylhydrolase exist, and both are multi-subunit enzymes. Additionally, there is a single-subunit serum isoform of this enzyme.

**Synonyms:**

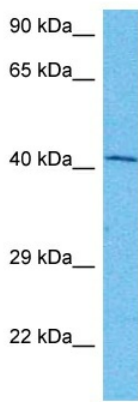
FLJ26025; HSD-PLA2; OTTHUMP00000008596

**Protein Families:**

Druggable Genome

**Protein Pathways:**

Ether lipid metabolism, Metabolic pathways

**Product images:**

Host: Rabbit  
Target Name: PAFAH2  
Sample Type: HepG2 Cell Lysate  
Antibody Dilution: 1.0µg/ml

Host: Rabbit  
Target Name: PAFAH2  
Sample Tissue: Human HepG2 Whole Cell lysates  
Antibody Dilution: 1ug/ml