

## Product datasheet for **TA361640**

### DAGLA Rabbit Polyclonal Antibody

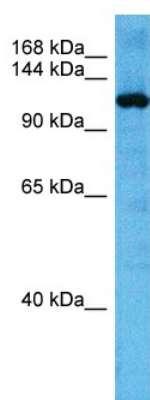
#### Product data:

Product Type:	Primary Antibodies
Applications:	WB
Reactivity:	Human
Host:	Rabbit
Clonality:	Polyclonal
Immunogen:	The immunogen is a synthetic peptide directed towards the C terminal region of human DAGLA
Formulation:	Liquid. Purified antibody supplied in 1x PBS buffer with 0.09% (w/v) sodium azide and 2% sucrose. <i>Note that this product is shipped as lyophilized powder to China customers.</i>
Concentration:	lot specific
Purification:	Affinity purified
Conjugation:	Unconjugated
Storage:	For short term use, store at 2-8°C up to 1 week. For long term storage, store at -20°C in small aliquots to prevent freeze-thaw cycles.
Stability:	Shelf life: one year from despatch.
Predicted Protein Size:	1042
Gene Name:	diacylglycerol lipase alpha
Database Link:	<a href="#">NP_006124.1</a> <a href="#">Entrez Gene 747 Human</a> <a href="#">Q9Y4D2</a>
Background:	This gene encodes a diacylglycerol lipase. The encoded enzyme is involved in the biosynthesis of the endocannabinoid 2-arachidonoyl-glycerol.
Synonyms:	C11orf11; DAGL(ALPHA); DAGLALPHA; DGL-alpha; KIAA0659; NSDDR
Protein Families:	Druggable Genome, Transmembrane



[View online »](#)

## Product images:



Host: Rabbit

Target Name: DAGLA

Sample Type: Mesenchymoma Tumor Lysate

Antibody Dilution: 1.0 $\mu$ g/ml

Host: Rabbit

Target Name: DAGLA

Sample Tissue: Human Mesenchymoma Tumor lysates

Antibody Dilution: 1 $\mu$ g/ml