

Product datasheet for **TA361639**

AP3B2 Rabbit Polyclonal Antibody

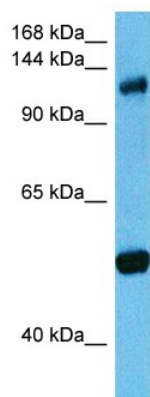
Product data:

Product Type:	Primary Antibodies
Applications:	WB
Reactivity:	Human
Host:	Rabbit
Clonality:	Polyclonal
Immunogen:	The immunogen is a synthetic peptide directed towards the C terminal region of human AP3B2
Formulation:	Liquid. Purified antibody supplied in 1x PBS buffer with 0.09% (w/v) sodium azide and 2% sucrose. <i>Note that this product is shipped as lyophilized powder to China customers.</i>
Concentration:	lot specific
Purification:	Affinity purified
Conjugation:	Unconjugated
Storage:	For short term use, store at 2-8°C up to 1 week. For long term storage, store at -20°C in small aliquots to prevent freeze-thaw cycles.
Stability:	Shelf life: one year from despatch.
Predicted Protein Size:	1050
Gene Name:	adaptor related protein complex 3 beta 2 subunit
Database Link:	NP_001265440.1 Entrez Gene 8120 Human Q13367-3
Background:	Adaptor protein-3 (AP3) is a heterotetrameric vesicle-coat protein complex. Some AP3 subunits are ubiquitously expressed, whereas others are expressed exclusively in neurons. The neuron-specific AP3 complex, which includes AP3B2, is thought to serve neuron-specific functions such as neurotransmitter release.
Synonyms:	Beta3B-adaptin; DKFZp686D17136; NAPT3
Protein Pathways:	Lysosome



[View online »](#)

Product images:



Host: Rabbit
Target Name: AP3B2
Sample Type: 293T Cell Lysate
Antibody Dilution: 1.0 μ g/ml

Host: Rabbit
Target Name: AP3B2
Sample Tissue: Human 293T Whole Cell lysates
Antibody Dilution: 1 μ g/ml