

Product datasheet for **TA361626**

ROC2 (RNF7) Rabbit Polyclonal Antibody

Product data:

Product Type:	Primary Antibodies
Applications:	WB
Reactivity:	Human
Host:	Rabbit
Clonality:	Polyclonal
Immunogen:	The immunogen is a synthetic peptide directed towards the middle region of human RNF7
Specificity:	Expected reactivity: Human
Formulation:	Liquid. Purified antibody supplied in 1x PBS buffer with 0.09% (w/v) sodium azide and 2% sucrose. <i>Note that this product is shipped as lyophilized powder to China customers.</i>
Concentration:	lot specific
Purification:	Affinity purified
Conjugation:	Unconjugated
Storage:	For short term use, store at 2-8°C up to 1 week. For long term storage, store at -20°C in small aliquots to prevent freeze-thaw cycles.
Stability:	Shelf life: one year from despatch.
Predicted Protein Size:	12 kDa
Gene Name:	ring finger protein 7
Database Link:	NP_001188299.1 Entrez Gene 9616 Human Q9UBF6
Background:	The protein encoded by this gene is a highly conserved ring finger protein. It is an essential subunit of SKP1-cullin/CDC53-F box protein ubiquitin ligases, which are a part of the protein degradation machinery important for cell cycle progression and signal transduction. This protein interacts with, and is a substrate of, casein kinase II (CSNK2A1/CKII). The phosphorylation of this protein by CSNK2A1 has been shown to promote the degradation of IκappaBα (CHUK/IKK-α/IKBKA) and p27Kip1 (CDKN1B). Alternatively spliced transcript variants encoding distinct isoforms have been reported.



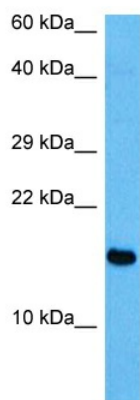
[View online »](#)

Synonyms: CKBBP1; RBX2; ROC2; SAG

Protein Families: Druggable Genome

Protein Pathways: Ubiquitin mediated proteolysis

Product images:



Host: Rabbit
Target Name: RNF7
Sample Type: Du145 Cell Lysate
Antibody Dilution: 1.0µg/ml

Host: Rabbit
Target Name: RNF7
Sample Tissue: Human Du145 Whole Cell lysates
Antibody Dilution: 1ug/ml