

## Product datasheet for **TA361625**

### S100A4 Rabbit Polyclonal Antibody

#### Product data:

Product Type:	Primary Antibodies
Applications:	WB
Reactivity:	Human
Host:	Rabbit
Clonality:	Polyclonal
Immunogen:	The immunogen is a synthetic peptide directed towards the middle region of human S100A4
Specificity:	<b>Expected reactivity:</b> Human
Formulation:	Liquid. Purified antibody supplied in 1x PBS buffer with 0.09% (w/v) sodium azide and 2% sucrose. <i>Note that this product is shipped as lyophilized powder to China customers.</i>
Concentration:	lot specific
Purification:	Affinity purified
Conjugation:	Unconjugated
Storage:	For short term use, store at 2-8°C up to 1 week. For long term storage, store at -20°C in small aliquots to prevent freeze-thaw cycles.
Stability:	Shelf life: one year from despatch.
Predicted Protein Size:	11 kDa
Gene Name:	S100 calcium binding protein A4
Database Link:	<a href="#">NP_002952.1</a> <a href="#">Entrez Gene 6275 Human</a> <a href="#">P26447</a>



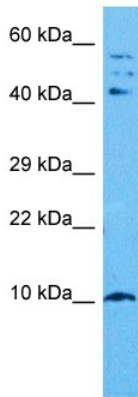
[View online »](#)

**Background:**

The protein encoded by this gene is a member of the S100 family of proteins containing 2 EF-hand calcium-binding motifs. S100 proteins are localized in the cytoplasm and/or nucleus of a wide range of cells, and involved in the regulation of a number of cellular processes such as cell cycle progression and differentiation. S100 genes include at least 13 members which are located as a cluster on chromosome 1q21. This protein may function in motility, invasion, and tubulin polymerization. Chromosomal rearrangements and altered expression of this gene have been implicated in tumor metastasis. Multiple alternatively spliced variants, encoding the same protein, have been identified.

**Synonyms:**

18A2; 42A; Calvasculin; CAPL; FSP1; Metastasin; MTS1; OTTHUMP00000015469; OTTHUMP00000032895; P9KA; PEL98

**Product images:**


Host: Rabbit  
 Target Name: S100A4  
 Sample Type: HepG2 Cell Lysate  
 Antibody Dilution: 1.0µg/ml

Host: Rabbit  
 Target Name: S100A4  
 Sample Tissue: Human HepG2 Whole Cell lysates  
 Antibody Dilution: 1ug/ml