

Product datasheet for **TA361624**

IMP4 Rabbit Polyclonal Antibody

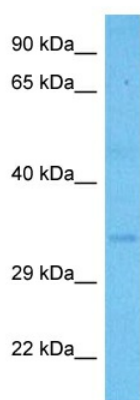
Product data:

| | |
|-------------------------|--|
| Product Type: | Primary Antibodies |
| Applications: | WB |
| Reactivity: | Human |
| Host: | Rabbit |
| Clonality: | Polyclonal |
| Immunogen: | The immunogen is a synthetic peptide directed towards the C terminal region of Human IMP4 |
| Specificity: | Expected reactivity: Human |
| Formulation: | Liquid. Purified antibody supplied in 1x PBS buffer with 0.09% (w/v) sodium azide and 2% sucrose. |
| Concentration: | lot specific |
| Purification: | Affinity purified |
| Conjugation: | Unconjugated |
| Storage: | For short term use, store at 2-8°C up to 1 week. For long term storage, store at -20°C in small aliquots to prevent freeze-thaw cycles. |
| Stability: | Shelf life: one year from despatch. |
| Predicted Protein Size: | 32 kDa |
| Gene Name: | IMP4 homolog, U3 small nucleolar ribonucleoprotein |
| Database Link: | NP_219484.1 Entrez Gene 92856 Human Q96G21 |
| Background: | IMP4 forms a ternary complex with IMP3 and MPP10 that interacts with U3 small nucleolar RNA (snoRNA), which is required for the early cleavage steps in pre-rRNA processing. |
| Synonyms: | BXDC4; MGC19606 |



[View online »](#)

Product images:



Host: Rabbit
Target Name: IMP4
Sample Type: A172 Cell Lysate
Antibody Dilution: 1.0µg/ml

Host: Rabbit
Target Name: IMP4
Sample Tissue: Human A172 Whole Cell lysates
Antibody Dilution: 1ug/ml