

## Product datasheet for **TA361620**

### LZTFL1 Rabbit Polyclonal Antibody

#### Product data:

|                         |   |
|-------------------------|---|
| Product Type:           | Primary Antibodies  |
| Applications:           | WB  |
| Reactivity:             | Human   |
| Host:                   | Rabbit  |
| Clonality:              | Polyclonal  |
| Immunogen:              | The immunogen is a synthetic peptide directed towards the middle terminal region of Human LZTFL1  |
| Specificity:            | <b>Expected reactivity:</b> Human   |
| Formulation:            | Liquid. Purified antibody supplied in 1x PBS buffer with 0.09% (w/v) sodium azide and 2% sucrose.<br><i>Note that this product is shipped as lyophilized powder to China customers.</i> |
| Concentration:          | lot specific  |
| Purification:           | Affinity purified   |
| Conjugation:            | Unconjugated  |
| Storage:                | For short term use, store at 2-8°C up to 1 week. For long term storage, store at -20°C in small aliquots to prevent freeze-thaw cycles.   |
| Stability:              | Shelf life: one year from despatch.   |
| Predicted Protein Size: | 32 kDa  |
| Gene Name:              | leucine zipper transcription factor like 1  |
| Database Link:          | <a href="#">NP_001263307.1</a><br><a href="#">Entrez Gene 54585 Human</a><br><a href="#">Q9NQ48</a>   |



[View online »](#)

**Background:**

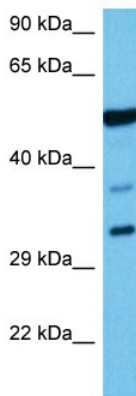
This gene encodes a ubiquitously expressed protein that localizes to the cytoplasm. This protein interacts with Bardet-Biedl Syndrome (BBS) proteins and, through its interaction with BBS protein complexes, regulates protein trafficking to the ciliary membrane. Nonsense mutations in this gene cause a form of Bardet-Biedl Syndrome; a ciliopathy characterized in part by polydactyly, obesity, cognitive impairment, hypogonadism, and kidney failure. This gene may also function as a tumor suppressor; possibly by interacting with E-cadherin and the actin cytoskeleton and thereby regulating the transition of epithelial cells to mesenchymal cells. Alternative splicing of this gene results in multiple transcript variants.

**Synonyms:**

FLJ36386

**Protein Families:**

Transcription Factors

**Product images:**

Host: Rabbit  
Target Name: LZTFL1  
Sample Type: PC-3 Cell Lysate  
Antibody Dilution: 1.0µg/ml

Host: Rabbit  
Target Name: LZTFL1  
Sample Tissue: Human PC-3 Whole Cell lysates  
Antibody Dilution: 1 ug/ml