

## Product datasheet for **TA361616**

### ASRGL1 Rabbit Polyclonal Antibody

#### Product data:

|                         |  |
|-------------------------|--|
| Product Type:           | Primary Antibodies   |
| Applications:           | WB   |
| Reactivity:             | Human  |
| Host:                   | Rabbit   |
| Clonality:              | Polyclonal   |
| Immunogen:              | The immunogen is a synthetic peptide directed towards the middle region of human ASRGL1  |
| Specificity:            | <b>Expected reactivity:</b> Human  |
| Formulation:            | Liquid. Purified antibody supplied in 1x PBS buffer with 0.09% (w/v) sodium azide and 2% sucrose.<br><i>Note that this product is shipped as lyophilized powder to China customers.</i>  |
| Concentration:          | lot specific   |
| Purification:           | Affinity purified  |
| Conjugation:            | Unconjugated   |
| Storage:                | For short term use, store at 2-8°C up to 1 week. For long term storage, store at -20°C in small aliquots to prevent freeze-thaw cycles.  |
| Stability:              | Shelf life: one year from despatch.  |
| Predicted Protein Size: | 32 kDa   |
| Gene Name:              | asparaginase like 1  |
| Database Link:          | <a href="#">NP_001077395.1</a><br><a href="#">Entrez Gene 80150 Human</a><br><a href="#">Q7L266</a>  |
| Background:             | Has both L-asparaginase and beta-aspartyl peptidase activity. May be involved in the production of L-aspartate, which can act as an excitatory neurotransmitter in some brain regions. Is highly active with L-Asp beta-methyl ester. Besides, has catalytic activity toward beta-aspartyl dipeptides and their methyl esters, including beta-L-Asp-L-Phe, beta-L-Asp-L-Phe methyl ester (aspartame), beta-L-Asp-L-Ala, beta-L-Asp-L-Leu and beta-L-Asp-L-Lys. Does not have aspartylglucosaminidase activity and is inactive toward GlcNAc-L-Asn. Likewise, has no activity toward glutamine. |

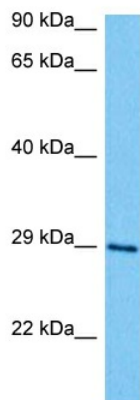


[View online »](#)

Synonyms: ALP; ALP1; CRASH; FLJ22316

Protein Families: Protease

### Product images:



Host: Rabbit  
Target Name: ASRGL1  
Sample Type: MCF7 Cell Lysate  
Antibody Dilution: 1.0 $\mu$ g/ml

Host: Rabbit  
Target Name: ASRGL1  
Sample Tissue: Human MCF7 Whole Cell lysates  
Antibody Dilution: 1 $\mu$ g/ml