

Product datasheet for TA361612

Poly(A) RNA polymerase, mitochondrial (MTPAP) Rabbit Polyclonal Antibody

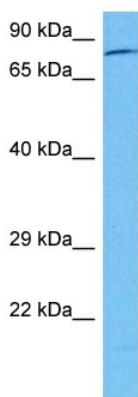
Product data:

Product Type:	Primary Antibodies
Applications:	WB
Reactivity:	Human
Host:	Rabbit
Clonality:	Polyclonal
Immunogen:	The immunogen is a synthetic peptide directed towards the middle terminal region of Human MTPAP
Specificity:	Expected reactivity: Human
Formulation:	Liquid. Purified antibody supplied in 1x PBS buffer with 0.09% (w/v) sodium azide and 2% sucrose.
Concentration:	lot specific
Purification:	Affinity purified
Conjugation:	Unconjugated
Storage:	For short term use, store at 2-8°C up to 1 week. For long term storage, store at -20°C in small aliquots to prevent freeze-thaw cycles.
Stability:	Shelf life: one year from despatch.
Predicted Protein Size:	78 kDa
Gene Name:	mitochondrial poly(A) polymerase
Database Link:	NP_060579.3 Entrez Gene 55149 Human Q9NJV4-2
Background:	The protein encoded by this gene is a member of the DNA polymerase type-B-like family. This enzyme synthesizes the 3' poly(A) tail of mitochondrial transcripts and plays a role in replication-dependent histone mRNA degradation.
Synonyms:	FLJ10486; PAP; PAPD1; RP11-305E6.3



[View online »](#)

Product images:



Host: Rabbit
Target Name: MTPAP
Sample Type: HCT15 Cell Lysate
Antibody Dilution: 1.0 μ g/ml

Host: Rabbit
Target Name: MTPAP
Sample Tissue: Human HCT15 Whole Cell lysates
Antibody Dilution: 1 μ g/ml