

Product datasheet for **TA361610**

PIH1D1 Rabbit Polyclonal Antibody

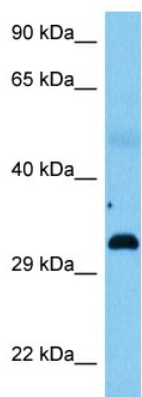
Product data:

Product Type:	Primary Antibodies
Applications:	WB
Reactivity:	Human
Host:	Rabbit
Clonality:	Polyclonal
Immunogen:	The immunogen is a synthetic peptide directed towards the middle region of human PIH1D1
Specificity:	Expected reactivity: Human
Formulation:	Liquid. Purified antibody supplied in 1x PBS buffer with 0.09% (w/v) sodium azide and 2% sucrose.
Concentration:	lot specific
Purification:	Affinity purified
Conjugation:	Unconjugated
Storage:	For short term use, store at 2-8°C up to 1 week. For long term storage, store at -20°C in small aliquots to prevent freeze-thaw cycles.
Stability:	Shelf life: one year from despatch.
Predicted Protein Size:	32 kDa
Gene Name:	PIH1 domain containing 1
Database Link:	NP_060386.1 Entrez Gene 55011 Human Q9NWS0
Background:	Involved in the assembly of C/D box small nucleolar ribonucleoprotein (snoRNP) particles. Recruits the SWI/SNF complex to the core promoter of rRNA genes and enhances pre-rRNA transcription. Mediates interaction of TELO2 with the R2TP complex which is necessary for the stability of MTOR and SMG1. Positively regulates the assembly and activity of the mTORC1 complex.
Synonyms:	FLJ20643; NOP17
Protein Families:	Druggable Genome



[View online »](#)

Product images:



Host: Rabbit
Target Name: PIH1D1
Sample Type: Lung Tumor Lysate
Antibody Dilution: 1.0 μ g/ml

Host: Rabbit
Target Name: PIH1D1
Sample Tissue: Human Lung Tumor lysates
Antibody Dilution: 1 μ g/ml