

Product datasheet for **TA361603**

AP3D1 Rabbit Polyclonal Antibody

Product data:

Product Type:	Primary Antibodies
Applications:	WB
Reactivity:	Human
Host:	Rabbit
Clonality:	Polyclonal
Immunogen:	The immunogen is a synthetic peptide directed towards the middle region of human AP3D1
Specificity:	Expected reactivity: Human
Formulation:	Liquid. Purified antibody supplied in 1x PBS buffer with 0.09% (w/v) sodium azide and 2% sucrose. <i>Note that this product is shipped as lyophilized powder to China customers.</i>
Concentration:	lot specific
Purification:	Affinity purified
Conjugation:	Unconjugated
Storage:	For short term use, store at 2-8°C up to 1 week. For long term storage, store at -20°C in small aliquots to prevent freeze-thaw cycles.
Stability:	Shelf life: one year from despatch.
Predicted Protein Size:	126 kDa
Gene Name:	adaptor related protein complex 3 delta 1 subunit
Database Link:	NP_001248755.1 Entrez Gene 8943 Human O14617
Background:	The protein encoded by this gene is a subunit of the AP3 adaptor-like complex, which is not clathrin-associated, but is associated with the golgi region, as well as more peripheral structures. The AP-3 complex facilitates the budding of vesicles from the golgi membrane, and may be directly involved in trafficking to lysosomes. This subunit is implicated in intracellular biogenesis and trafficking of pigment granules, and possibly platelet dense granules and neurotransmitter vesicles. Alternatively spliced transcript variants encoding different isoforms have been found for this gene.



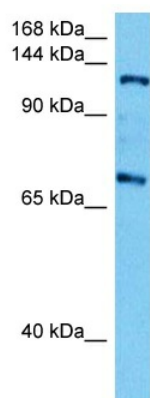
[View online »](#)

Synonyms: ADTD; Delta-adaptin; hBLVR

Protein Families: Druggable Genome

Protein Pathways: Lysosome

Product images:



Host: Rabbit
Target Name: AP3D1
Sample Type: DLD1 Cell Lysate
Antibody Dilution: 1.0 μ g/ml

Host: Rabbit
Target Name: AP3D1
Sample Tissue: Human DLD1 Whole Cell lysates
Antibody Dilution: 1 μ g/ml