

## Product datasheet for **TA361595**

### TRAM1 Rabbit Polyclonal Antibody

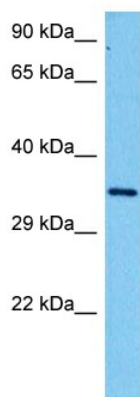
#### Product data:

Product Type:	Primary Antibodies
Applications:	WB
Reactivity:	Human
Host:	Rabbit
Clonality:	Polyclonal
Immunogen:	The immunogen is a synthetic peptide directed towards the C terminal region of human TRAM1
Specificity:	<b>Expected reactivity:</b> Human
Formulation:	Liquid. Purified antibody supplied in 1x PBS buffer with 0.09% (w/v) sodium azide and 2% sucrose.
Concentration:	lot specific
Purification:	Affinity purified
Conjugation:	Unconjugated
Storage:	For short term use, store at 2-8°C up to 1 week. For long term storage, store at -20°C in small aliquots to prevent freeze-thaw cycles.
Stability:	Shelf life: one year from despatch.
Predicted Protein Size:	37 kDa
Gene Name:	translocation associated membrane protein 1
Database Link:	<a href="#">NP_055109.1</a> <a href="#">Entrez Gene 23471 Human</a> <a href="#">Q15629-2</a>
Background:	This gene encodes a multi-pass membrane protein that is part of the mammalian endoplasmic reticulum. The encoded protein influences glycosylation and facilitates the translocation of secretory proteins across the endoplasmic reticulum membrane by regulating which domains of the nascent polypeptide chain are visible to the cytosol during a translocational pause.
Synonyms:	PNAS8; PRO1292; TRAM; TRAMP
Protein Families:	Druggable Genome, Transmembrane



[View online »](#)

## Product images:



Host: Rabbit  
Target Name: TRAM1  
Sample Type: HepG2 Cell Lysate  
Antibody Dilution: 1.0 $\mu$ g/ml

Host: Rabbit  
Target Name: TRAM1  
Sample Tissue: Human HepG2 Whole Cell lysates  
Antibody Dilution: 1 $\mu$ g/ml