

Product datasheet for **TA361592**

SYNJ2BP Rabbit Polyclonal Antibody

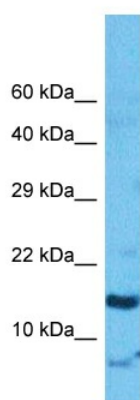
Product data:

Product Type:	Primary Antibodies
Applications:	WB
Reactivity:	Human
Host:	Rabbit
Clonality:	Polyclonal
Immunogen:	The immunogen is a synthetic peptide directed towards the middle region of human SYNJ2BP
Specificity:	Expected reactivity: Human
Formulation:	Liquid. Purified antibody supplied in 1x PBS buffer with 0.09% (w/v) sodium azide and 2% sucrose. <i>Note that this product is shipped as lyophilized powder to China customers.</i>
Concentration:	lot specific
Purification:	Affinity purified
Conjugation:	Unconjugated
Storage:	For short term use, store at 2-8°C up to 1 week. For long term storage, store at -20°C in small aliquots to prevent freeze-thaw cycles.
Stability:	Shelf life: one year from despatch.
Predicted Protein Size:	15 kDa
Gene Name:	synaptojanin 2 binding protein
Database Link:	NP_060843.2 Entrez Gene 55333 Human P57105
Background:	Regulates endocytosis of activin type 2 receptor kinases through the Ral/RALBP1-dependent pathway and may be involved in suppression of activin-induced signal transduction.
Synonyms:	ARIP2; FLJ11271; FLJ41973; OMP25
Protein Families:	Transmembrane



[View online »](#)

Product images:



Host: Rabbit
Target Name: SYNJ2BP
Sample Type: Ovary Tumor Lysate
Antibody Dilution: 1.0 μ g/ml

Host: Rabbit
Target Name: SYNJ2BP
Sample Tissue: Human Ovary Tumor lysates
Antibody Dilution: 1 μ g/ml