

## Product datasheet for **TA361589**

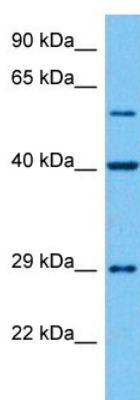
### SPG21 Rabbit Polyclonal Antibody

#### Product data:

Product Type:	Primary Antibodies
Applications:	WB
Reactivity:	Human
Host:	Rabbit
Clonality:	Polyclonal
Immunogen:	The immunogen is a synthetic peptide directed towards the N terminal region of Human SPG21
Specificity:	<b>Expected reactivity:</b> Human
Formulation:	Liquid. Purified antibody supplied in 1x PBS buffer with 0.09% (w/v) sodium azide and 2% sucrose.
Concentration:	lot specific
Purification:	Affinity purified
Conjugation:	Unconjugated
Storage:	For short term use, store at 2-8°C up to 1 week. For long term storage, store at -20°C in small aliquots to prevent freeze-thaw cycles.
Stability:	Shelf life: one year from despatch.
Predicted Protein Size:	30 kDa
Gene Name:	spastic paraplegia 21 (autosomal recessive, Mast syndrome)
Database Link:	<a href="#">NP_001121361.1</a> <a href="#">Entrez Gene 51324 Human</a> <a href="#">Q9NZD8-2</a>
Background:	The protein encoded by this gene binds to the hydrophobic C-terminal amino acids of CD4 which are involved in repression of T cell activation. The interaction with CD4 is mediated by the noncatalytic alpha/beta hydrolase fold domain of this protein. It is thus proposed that this gene product modulates the stimulatory activity of CD4. Mutations in this gene are associated with autosomal recessive spastic paraplegia 21 (SPG21), also known as mast syndrome. Alternative splicing results in multiple transcript variants.
Synonyms:	ACP33; BM-019; GL010; MASPARDIN; MAST



[View online »](#)

**Product images:**

Host: Rabbit  
Target Name: SPG21  
Sample Type: U937 Cell Lysate  
Antibody Dilution: 1.0 $\mu$ g/ml

Host: Rabbit  
Target Name: SPG21  
Sample Tissue: Human U937 Whole Cell lysates  
Antibody Dilution: 1  $\mu$ g/ml