

Product datasheet for **TA361577**

BET1 Rabbit Polyclonal Antibody

Product data:

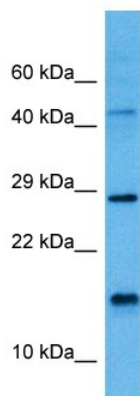
Product Type:	Primary Antibodies
Applications:	WB
Reactivity:	Human
Host:	Rabbit
Clonality:	Polyclonal
Immunogen:	The immunogen is a synthetic peptide directed towards the N terminal region of human BET1
Specificity:	Expected reactivity: Human
Formulation:	Liquid. Purified antibody supplied in 1x PBS buffer with 0.09% (w/v) sodium azide and 2% sucrose. <i>Note that this product is shipped as lyophilized powder to China customers.</i>
Concentration:	lot specific
Purification:	Affinity purified
Conjugation:	Unconjugated
Storage:	For short term use, store at 2-8°C up to 1 week. For long term storage, store at -20°C in small aliquots to prevent freeze-thaw cycles.
Stability:	Shelf life: one year from despatch.
Predicted Protein Size:	12 kDa
Gene Name:	Bet1 golgi vesicular membrane trafficking protein
Database Link:	NP_005859.1 Entrez Gene 10282 Human O15155
Background:	This gene encodes a golgi-associated membrane protein that participates in vesicular transport from the endoplasmic reticulum (ER) to the Golgi complex. The encoded protein functions as a soluble N-ethylmaleimide-sensitive factor attachment protein receptor and may be involved in the docking of ER-derived vesicles with the cis-Golgi membrane. Alternative splicing results in multiple transcript variants.
Synonyms:	DKFZp781C0425; hbet1
Protein Families:	Druggable Genome, Transmembrane



[View online »](#)

Protein Pathways: SNARE interactions in vesicular transport

Product images:



Host: Rabbit
Target Name: BET1
Sample Type: Uterus Tumor Lysate
Antibody Dilution: 1.0 μ g/ml

Host: Rabbit
Target Name: BET1
Sample Tissue: Human Uterus Tumor lysates
Antibody Dilution: 1 μ g/ml